



IG1000

2D and DPM Barcode Scanner

SCANTECH ID[®]
CHAMPTEK Group

Introduction

IG1000 is an industrial handheld high performance 2D and DPM barcode scanner.

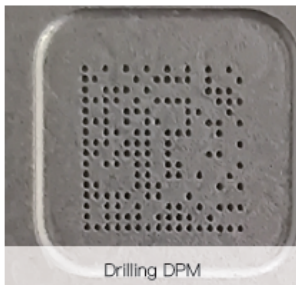
Advanced CMOS image recognition technology, intelligent image recognition system, equipped with 1.3 million pixel global exposure camera, barcode dirt, defects, low contrast and other situations can be effectively dealt with. It can be mainly used for DPM barcode scanning in industrial production, machinery manufacturing, PCB production and other scenarios.

IG1000 has most modern design with rugged casing and supports IP65 sealing protection, with its unmatched performance for the majority of 1D, 2D and DPM barcode reading to increase your productivity.

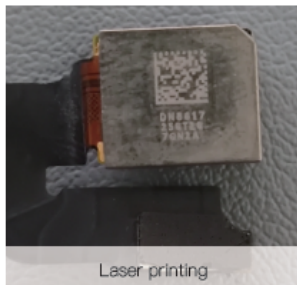
Features

- It is anti-drop and anti-vibration with highly integrated 2D decoding structure.
- Its high-performance MCU to easily identify the mainstream 1D and 2D barcodes in the market.
- Built in 1.3 megapixel global exposure camera that can easily read more than 3mil bar codes to meet the DPM bar code scanning needs.
- Support different media DPM codes, such as plastic, cast iron, PCB, aluminum, with different processes such as reflection, low contrast, perforation, etching, corrosion and impact.
- Good performance for low contrast, defacement, distortion and other forms of printed bar code reading scenes.

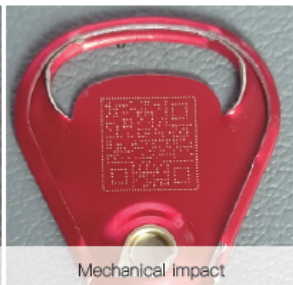
Drilling DPM, laser printing, mechanical impact, etching, printing and other types of DPM barcode reading.



Drilling DPM



Laser printing



Mechanical Impact



Etching

IG1000

Depth of Field

| Barcode Type | Barcode Density | Minimum | Maximum |
|--------------|-----------------|---------|---------|
| Code 39 | 0.076mm(3mil) | 40mm | 75mm |
| Code 39 | 0.127mm(5mil) | 30mm | 90mm |
| Data Matrix | 0.127mm(5mil) | 40mm | 70mm |



Specifications

Physical Characteristics

| | |
|-----------------|-----------------------------------|
| Weight | |
| Body weight | Approx. 166g(not include cable) |
| Cable Length | 1.5 meters |
| Dimension | 72.0mm (W) x 171.2mm (H) x 80.9mm |
| Color Available | Black and Light gray |

Performance

| | |
|----------------------|---|
| Light Source | White light illumination, Red bar aimer |
| Sensor | 1.3m / 1280*1024 pixels |
| Field of view | Horizontal – 40°, Vertical – 34° |
| Scan Speed | 65 cm per second |
| Reading Distance | 450mm@20mil/0.5mm, PCS90%, QRCode |
| Print Contrast Ratio | ≥20% |
| Resolution | 1D: 3mil/0.076mm PCS90%, Code39 2D: 5mil/0.127mm PCS90%, DM code |
| Scanning Mode | Trigger, Induction, Continuous |
| Indicator | LED 、 Buzzer |
| Interface | RS-232 or USB (HID KBW, Virtual comport) |

Reading Angle

| | |
|----------------|--|
| Pitch Angle | 5°~60° (±5°) |
| Skew Tolerance | 5°~60° (±5°) |
| Rolling | ±360° |
| Ambient Light | Dark Environment, Indoor Natural Light |
| Sealing | IP65 Water and dust protection |

Environmental

| | |
|-----------------------|-----------------------------------|
| Operating Temperature | -20 °C to 50 °C (-4 °F to 122 °F) |
| Storage Temperature | -40 °C to 70 °C (-40°F to 158 °F) |
| Relative Humidity | 5% to 95% (Non-condensing) |
| Vibration Test | 10H@125RPM |

Reliability

| | |
|--------------------|---|
| Life Time | |
| Trigger Switch | 1,000,000 times @1kg ±50g cycles |
| MTBF (calculated) | 50,000 hours |
| Thermal Shock | |
| High Temp. | 60 °C (140 °F) |
| Low Temp. | -20 °C (-4 °F) |
| Cycle time | 30 minutes for high temp. , 30 minutes for low temp. |
| Cycles | 24 cycles |
| Cable Bending Test | 25,000 times minimum (30 times/min @ 200g/90°) |
| Drop Resistance | 59.05 inches (150cm) drop on concrete surface |

Readable Symbolologies

Code Symbolologies

1D : UPC-A, UPC-E, EAN-8, EAN-13, Code 128, Code 39, Code 93, Interleaved 2 of 5.

2D: QR, Data Matrix, Micro QR, Aztec and Hanxin Code.

Good performance to read DPM barcode

Due to ChampTek/Scantech ID's continuing product improvement programs, specifications and features are subject to change.