

# CHAMPTEK<sup>®</sup>

*We value your ID's*

## SCANTECH ID<sup>®</sup>



***Computer Vision and  
Auto-ID Total Solution  
Provider***

Version BF5

## ***Brand Story***

Champtek was founded in 1985 specializing in Computer vision and AIDC Technology. We are an innovative and leading total solution provider and manufacturer in Taiwan.

After being highly successful in marketing the CHAMPTEK brand, we acquired Scantech ID, a Netherlands-based manufacturer, and expanded our line of Products globally under the dual brands of "CHAMPTEK" and "SCANTECH ID".

Nowadays CHAMPTEK and SCANTECH ID provide a wide variety of Computer vision and AIDC solutions, including Volume Measurement devices, Scan Kiosks, Price Checkers, Consumer and Rugged Tablets, Barcode Scanners and magnetic card readers from high C/P value combination to the industrial grade segment of the market.

## ***The 'V' in the CHAMPTEK***

The red "V" in the middle of our name CHAMPTEK stands for VALUE, which represents our respect to our most valued Customers.

We are committed and dedicated to our values which are Innovation, Quality and Reliability.

**We, value your ID's !**



# Product Portfolio - Volume Measurement Solution



VM600 Dimensioner suite



VM602 Desktop station



VM610 Large Parcel Dimensioner suite



VM200 handheld wireless dimensioner



VM601 Floor station



VM605 Mobile cart

SCANTECH ID<sup>®</sup>

# Product Portfolio - Scan KIOSK / Price Checker



10.1" SK-100



8" SP-80



5.7" SK-50



4.3" SK-40

SCANTECH ID®



3.5" SG15C

# Product Portfolio - Barcode Scanners / Modules / Slot Readers

ChampTek currently operates under two brand names, "CHAMPTEK" and "SCANTECH ID", and provides to the variety of customers' needs.



380 Series /SD700 /  
SD320 /SD120



## Handheld Scanner

220/221/222 wired  
and wireless series



520/521/522 wired and  
wireless series

## Pocket Scanners



MB700x series



600 /700 /800  
wired and wireless series



## Fixed Mount Scanners

FI300 /IP65 FI700 series



## Slot Reader and Pen Reader

MR300 /BR300 /WD300



PAVO

## Desktop Scanners



NOVA



LYRA



AQUILA



CUBAL

**CHAMPTEK**<sup>®</sup>  
We value your ID's



## DPM Barcode Scanner

IG1000 series



## Modules

MCR14 /  
MIR4/5/7/8,  
MICA

**SCANTECH ID**<sup>®</sup>

# Mobile Tablets



Specification	X-80	X-120/X-200
Processor	Octa Core, 2.0GHz x4+2.0GHz x4, Separated GPU (Mali-G72)	
Operating System	Android 11~15 OS (other OS or later version are upon request)	
Memory/Storage	(UMCP) 4GB+128GB / 8GB+256GB (max.)	
Dimensions	211.50mm x 140.80mm x 20.50mm	259.50mm x 171.6mm x 19mm

## Media

Display	8" 1280 x 800 (HD) standard / 1920 x 1200 (FHD) optional	10" WUXGA 1920 x 1200 10-point multi-touch
Audio	Dual Speakers(2 x 8 Ohm 1W), Dual Microphones , USB TYP-C Earphone	

## Network Interface

Wired LAN	USB TYPE C to RJ45 Ethernet port converter, 100/1000 Mbps-(Conforms with IEEE802.3x)	100/1000 Mbps-(Conforms with IEEE802.3x)
Wireless LAN	Wi-Fi 802.11 a/b/g/n/AC or AX	
Wireless Bluetooth	Dual Frequency (EDR+BLE 4.0/5.3), >10M	
GPS	GPS/A-GPS/Beidou/GLONASS/ Galileo RTK High-precision (optional)	GPS/Glonass/Beidou/Galileo/QZSS/SBAS Tri-band reception concurrently

## 4G LTE Module Band Frequency

(4G)LTE FDD	B1/B3/B5/B8/B20
(4G)LTE TDD	B34/B38/B39/B40/B41
(3G)	WCDMA (B1/B5/B8)
(2G)GSM	B3/B8 (900&1800)

## Scan Module (optional)

Camera Front	8MP, Fixed Focus
Camera Rear	13MP, with Auto Focus, Flash
2D scanner	1D/2D Barcode scanner/2D Fingerprint/RFID(NFC) module

## Durability

Storage Temperature	-20°C to 70°C
Operating Temperature	-10°C to 60°C
Sealing Protection	IP65/IP67
Drop Test	1.2 meters

## Power Supply

AC Adapter	57W (19V / 3A)	
Battery Volume	Swappable 7400mAh battery pack	Swappable 12000mAh battery pack
Battery Endurance	9 hours	12 hours
Accessory	1 to 4 Battery Charging Cradle set	

## Interface

I/O Ports	USB TYPE-C (1*USB2.0 OTG) USB TYPE-A (2*USB2.0) DC jack SIM Card Slot Micro SDXC Card Slot(support up to 128G)	
Special Feature	N/A	Speedy APP trigger Physical Button

# Volume Measurement Solution

Brand Availability  CHAMPTEK  SCANTECH ID



Specification	VM200 Handheld Hybrid Dimensioner	VM610 Large Parcel Dimensioning Suite
Aimer Light Source	650±10nm Red VLD	
Field of View	Horizontal 50°, Vertical 74°	Horizontal 74°, Vertical 50.5°
Accuracy	d=1, less than ±1cm deviation	d=±2 cm deviation
Indicator	Beep and LED (Green, Red and Blue)	Beep and LED
Measurement time	Less than 1 second	Less than 1 second
Object size	Support cuboid and irregular shaped measurement	Support cuboid and irregular shaped measurement
Min. dimension	10 cm / 0.394 inches cube	
Max. dimension	60cm / 23.62 inches cube	Refer to the Dimension table
Color	All opaque packaging except black, very glossy and transparent	All opaque packaging except black, very glossy and transparent
Measurement angle	Cuboid shape objects : By pitch scan (pitch 35° ~ 65° and skew ± 7° angle) Irregular and long side standing objects : from top, vertical scan.	From mounted top, vertical scan
Measurement surface	No black, transparent or very shining background	No black, transparent or very shining background
Ambient light	0 to 3000 lux, avoid direct sunlight	0 to 3000 lux, avoid direct sunlight
Dimension (Device)	120.0 W x 83.0 D x 196.7 H mm	3D Camera: 156.0 W x 150.0 D x 50.0 H mm
(Charging Cradle)	119.9 W x 136.9 D x 92.1 H mm	
Sealing protection	IP54	3D camera: IP42

## Bluetooth Wireless Characteristics

Wireless Standard	Bluetooth V5.2, HID and SPP profile supported	IEEE 802.11 a/b/g/n, 2.4GHz and 5GHz dual band
Battery	Lithium-ion Battery (3.7V, 3350mAh)	
Recharge Time	Approx. 2.5~6 hours in different charging mode	
Scan Per Charge	2,500 times in 5 seconds reading duration or approx. 3.5 hours operation, you can place the device on its charging cradle once you are not measuring can extend its operation to more than 8 hours	Mounted type : Hang on a ceiling bracket or a stable pillar for hanging VM610 Built in a hanging balancing calibration system. Option: weighing scale and barcode scanner. Built in VMScan dimensioning system and VM webcon web configuration system.
Transmission Range	Class 1, up to 80m (in open space)	

## Symbologies



## Dimension Table

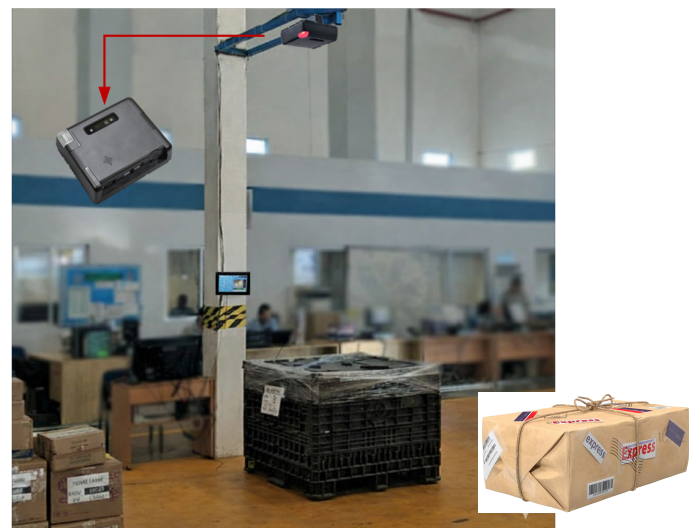
### VM610

VM610 mounted 200cm			Mounted at 250cm			Mounted at 300cm		
Object Height	Max Length	Max Width	Object Height	Max Length	Max Width	Object Height	Max Length	Max Width
20	200	130	30	250	160	40	300	190
80	128	80	90	178	112	80	250	160
100	103	65	130	128	80	120	200	130
120	80	50	170	80	50	160	150	97
160	30	17	210	30	17	200	103	65

Min. Dim. 20x20x20 cm      30x30x30 cm      40x40x40 cm



VM200 Handheld Dimensioner  
Read dimension & Barcode 2 in one





Specification	VM600 Dimensioning Suite	VM601/602/605/606/607 Volume Dimensioner
Field of View		Horizontal 74°, Vertical 50°
Accuracy		d=0.5 cm at mounted height 0.7m to 1.5m, d=1cm at mounted height > 1.5m to 1.8m of 3D camera
Indicator		Beep and LED
Measurement time		Less than 1 second
Object size		Support cuboid and irregular shaped measurement
Min. dimension		Refer to the Dimension table
Max. dimension		Refer to the Dimension table
Color		All opaque packaging except black, very glossy and transparent
Measurement type		From mounted top, vertical scan
Measurement surface		No black, transparent or very shining background
Ambient light		0 to 3000 lux, avoid direct sunlight
Dimension		3D Camera: 156.0 W x 150.0 D x 50.0 H mm
(Other dimension)		High Stand, short Stand, Standard cart and T-shaped dual cameras cart dimension are upon request
Sealing protection		3D Camera: IP42
Wireless LAN		IEEE 802.11 a/b/g/n, 2.4GHz and 5GHz dual band

### Suite inclusions

No	Description	Quantity
1	3D Dimensioner with POE & WiFi	1
2	10.1" touch panel	1
3	HDMI cable for panel	1
4	Mounted VESA bracket of panel	1
5	1.8 m Type-A USB cable x 1 for panel 3m type-C USB cable x 1 for PC	2
6	3m Ethernet Cable	1
7	Power adaptor with 2.5m cable	2
8	Tools : VMScan and VM Webcam	1

### Optional Modules

- Height adjustable vertical stand  
VM601: 120/150/180cm, VM602: 70/95/120cm
- Weighing scale
- 2D Barcode Scanner
- Mobile cart for VM605 or VM606 dual cameras

### Features



### Dimension Table

#### VM601

VM600 mounted 120cm    Mounted at 150cm    Mounted at 180cm

Object Height	Max Length	Max Width	Object Height	Max Length	Max Width	Object Height	Max Length	Max Width
2.54	120	75	2.54	155	95	7.62	190	115
15	105	65	25	130	80	30	160	100
25	95	60	50	100	60	60	125	75
40	75	45	70	75	45	90	90	55
60	55	30	90	55	30	120	55	30

Min. Dim. 5x5x5 cm

5x14x14 cm

10x20x20 cm

#### VM602 / VM605

VM600 mounted 70cm    Mounted at 95cm    Mounted at 120cm

Object Height	Max Length	Max Width	Object Height	Max Length	Max Width	Object Height	Max Length	Max Width
2.54	65	40	2.54	95	55	2.54	120	75
5	60	35	10	85	50	15	105	65
10	55	30	20	70	40	25	95	60
15	45	25	30	60	35	40	75	45
25	35	20	40	50	30	60	55	30

Min. Dimension (all height) : 5 x 5 x 5 cm



VM601



VM602



VM605



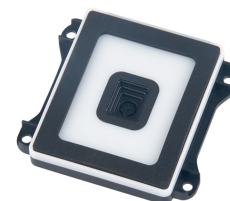
VM606



VM607

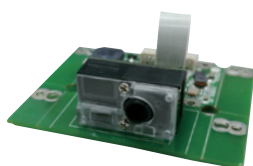
# Barcode Scanning Modules

- Compact size design for built-in or OEM product applications



Specification	MCR14	MCR14S	MIR8
Light Source	632±5nm Red LED		Warm White LED
Depth of Field	Up to 500mm@20mil/0.5mm, PCS90%, Code 39	Up to 250mm@20mil/0.5mm, PCS90%, Code 39	Up to 210mm@20mil/0.5mm, PCS90%, Code 39
Scan Rate (per second)	Smart detection, up to 500 scans	100 scans ±10%	65 cm per second
Field of View	Horizontal: 45°		Horizontal: 60°, Vertical 50°
Resolution	4mil/0.1mm		640*480 pixels, ≥3mil, PCS90%, CODE 39
Print Contrast Ratio	25%		≥20%
Indicator	Beeper		Beeper
Interface	Module only: UART/USB (HID, Virtual COM) Module with interface board: RS232/USB/KBW		USB (USB-KBW, HID-POS, USB-COM) or RS232
Dimensions	25 x 20 x 11.5mm		61 L x 65 W x 18.3 H mm
Power	DC 5V±5%		DC 5V±5%
Option			13.56MHz NFC ISO14443A/B card reading

## Symbologies



Specification	MIR4W	MIR5	MIR7
Light Source	Illumination White LED, Aimer Red LED	Illumination White LED, Almer Green LED	Illumination White LED, Almer Red LED
Depth of Field	Up to 250mm@20mil/0.5mm, PCS90%, Code 39	Up to 550mm@20mil/0.5mm, PCS90%, Code 39	
Scan Rate / Speed	60 images	100cm per second	65cm per second
Field of View	Horizontal: 55°, Vertical: 35°	Horizontal: 44°, Vertical: 33°	Horizontal: 42°, Vertical: 27°
Resolution	1280 (H) x 800(V)Pixels, 1D: 4mil/0.1mm 2D: 8mil/0.2mm	1280 (H) x 1024 (V)Pixels, 1D ≥4mil/0.1mm, ≥8mil/0.2mm@PCS90% QRCode	1 Mega Pixels, 1D ≥3mil/0.076mm, ≥8mil/0.2mm@PCS90% QRCode
Print Contrast Ratio	25%	20%	15%
Indicator	Beeper	Buzzer(External Circuit)	Buzzer(External Circuit)
Interface	RS232, USB (HID, Virtual COM)	USB, TTL(Optional)	USB (USB-HID KBW,USB-COM), TTL-UART
Dimensions	A1: 53.00 W x 40.90 D x 15.20 H mm (Wide board with three mounting areas and connected by a molex cable. The engine is mounted on the board.) A2: 36.00 W x 40.90 D x 15.20 H mm (Wide board with one mounting area and connected by a molex cable. The engine is mounted on the board.) A3: 36.00 W x 40.90 D x 12.00 H mm (Narrow board with one mounting area and connected by a molex cable. The engine is separated.) D: 38.85 W x 23.50 x 5.20 H mm (Narrow board with one mounting area and connected by a FPC. The engine is separated.)	32mm W x 13.4mm L x 13.4mm H  FPC 12PIN Pitch 0.5, Length 5CM Working Voltage: DC 3.3-5V Current: 300mA (Average Work),80mA(Standby),40mA(Sleep)	28.3mm W x 19.1mm L x 12.0mm H  FPC 12PIN Pitch 0.5, Length 5cm Working Voltage: DC 3.3V Current: 220mA (Average Work),120mA(Standby),40mA(Sleep)
Power	DC 5V±5%		

## Symbologies





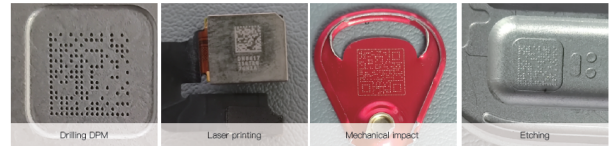
IG1000 wired



IG1010 wireless, equipped with a dongle and charge cable, 2.4G RF&BT



IG1020 wireless, equipped a cradle as wireless data receiver and charger. 2.4G RF&BT



Specification	IG1000	IG1010 / IG1020
Light Source	White Light illumination, Red bar Aimer	
Depth of Field	Up to 450mm@20mil/0.5mm, PCS90%, QRCode	
Field of View	Horizontal: 40°, Vertical: 34°	
Resolution	1D: 3mil/0.076mm, 2D: 5mil/0.127mm, 1.3M pixels	
Print Contrast Ratio	20%	
Indicator	Beeper and LED, Power indicator	
Ambient Light	Up to 100,000 Lux	
Interface	RS232, USB (HID, Virtual COM)	
Dimensions	150 x 70 x 95mm	
Power	5 VDC (+/- 10%)/500mA	
Sealing protection	IP54	
Drop Resistance	59.05 inches (150cm)	

## General Purpose Barcode Scanner

## IP protection Sealed Barcode Scanner



Specification	SG600/BT	IG640/BT	SG700/BT	IG740/BT
Light Source	632±5nm Red LED	White LED	632±5nm Red LED	White LED
Depth of Field	Up to 500mm@20mil/0.5mm, PCS90%, Code 39	Up to 250mm@20mil/0.5mm, PCS90%, Code 39	Up to 500mm@20mil/0.5mm, PCS90%, Code 39	Up to 250mm@20mil/0.5mm, PCS90%, Code39
Field of View	Horizontal: 45°	Horizontal: 55°, Vertical: 35°	Horizontal: 45°	Horizontal: 55°, Vertical: 35°
Scan Rate (per second)	Smart detection, up to 500 scans	60 images	Smart detection, up to 500 scans	60 images
Resolution	4mil/ 0.1mm	1D: 4mil/0.1mm 2D: 8mil/0.2mm	4mil/0.1mm	1D:4mil/0.1mm 2D:8mil/0.2mm
Print Contrast Ratio	25%			
Indicator	Beeper and LED			
Ambient Light	Up to 100,000 Lux			
Interface	RS232, USB (HID, Virtual COM)			
Dimensions	169.2 x 71.1 x 62.6mm		177.9 x 75 x 71.3mm	
Power	DC 5V ±5%			
Sealing protection	IP42		IP54 (wired model), IP42 (wireless model)	
Drop Resistance	1.5m (wired model) , 1.2m (wireless model)		1.8m (wired model) , 1.5m (wireless model)	

## Wireless Characteristics

Wireless Standard	Bluetooth V2.1, HID and SPP profile supported			
Battery	Lithium-ion Battery (3.7V, 2600mAh)			
Charge Time	Approx. 5 hours			
Scan Per Charge	50,000 times (continuous read)	20,000 times (continuous read)	50,000 times (continuous read)	20,000 times (continuous read)
Radio Transmission Range	Class 1, up to 100m (in open space)			

## Symbologies



## OCR-B Supported 2D Barcode Scanner

- Ergonomic design and high performance
- Design with IP42 protection
- RF and Bluetooth supported
- 220BT and 520BT are equipped a RF/BT dongle, while the 221BT and 521BT with a charging cradle
- 520 and 521 series support to read OCR-B character



Specification	IG220	IG520
Light Source	White light illumination, Red Dot aimer	White light illumination, Red bar aimer
Depth of Field	Up to 320 mm@20mil/0.5mm, PCS90%, Code39	Up to 420 mm@20mil/0.5mm, PCS90%, Code39
Field of View	Horizontal: 36°, Vertical: 28°	Horizontal: 35°, Vertical: 27°
Motion tolerance	25cm per second	35cm per second
Resolution	640(H) x 480(V) pixels, 1D: 4mil/0.1mm 2D: 8mil/0.2mm QRCode	1280(H) x 800(V) pixels, 1D: 3mil/0.076mm 2D: 8mil/0.2mm QRCode
Print Contrast Ratio	25%	15%
Indicator	Beeper and LED	
Ambient Light	Up to 100,000 Lux	
Interface	RS232, USB (HID, Virtual COM)	
Dimensions	L167x W70 x H88mm	
Power	DC 5V±5%	
Sealing protection	IP42	
Drop Resistance	1.5m/ 59.05inches	

### Symbologies



Specification	IG221 / IG222	IG521 / IG522
Light Source	White light illumination, Red Dot aimer	White light illumination, Red bar aimer
Depth of Field	Up to 320 mm@20mil/0.5mm, PCS90%, Code39	Up to 420 mm@20mil/0.5mm, PCS90%, Code39
Field of View	Horizontal: 36°, Vertical: 28°	Horizontal: 35°, Vertical: 27°
Motion tolerance	25cm per second	35cm per second
Resolution	640(H) x 480(V) pixels, 1D: 4mil/0.1mm 2D: 8mil/0.2mm QRCode	1280(H) x 800(V) pixels, 1D: 3mil/0.076mm 2D: 8mil/0.2mm QRCode
Print Contrast Ratio	25%	15%
Indicator	Beeper and LED	
Ambient Light	Up to 100,000 Lux	
Interface	2.4G RF or Bluetooth (HID, SPP, BLE)	
Dimensions	L167x W70 x H88mm (Scanner), L123 x W88.5 x H70mm (Cradle)	
Power	DC 5V±5%	
Drop Resistance	1.5m/ 59.05inches	

### Wireless Characteristics

Wireless Standard	2.4GHZ (ISM frequency band), Bluetooth 4.2	
Battery type	Lithium-ion Battery (3.7V, 2000mAh)	
Charge Time	Approx. 7 hours	
Scan Per Charge	>= 12 hours in continuous read	>= 12 hours in continuous read
Radio Transmission Range	>= 60m line of sight for 2.4G RF, up to 30m for Bluetooth 4.2	

### Symbologies



## General Purpose 1D or 2D Barcode Scanner



- Ergonomic and trendy design
- Design with IP42 protection
- Bluetooth supports HID and SPP profile
- Up to 100m transmission range (in open space)

Specification	SG800/BT	IG820/BT
Light Source	632±5nm Red LED	White LED
Depth of Field	Up to 600mm@20mil/0.5mm, PCS90%, Code 39	Up to 250mm@20mil/0.5mm, PCS90%, Code 39
Field of View	Horizontal: 45°	Horizontal: 55°, Vertical: 35°
Scan Rate (per second)	Smart detection, up to 500 scans	60 images
Resolution	4mil/0.1mm	1D: 4mil/0.1mm 2D: 8mil/0.2mm
Print Contrast Ratio	25%	
Indicator	Beeper and LED	
Ambient Light	Up to 100,000 Lux	
Interface	RS232, USB (HID, Virtual COM)	
Dimensions	192 x 78 x 72mm	
Power	DC 5V±5%	
Sealing protection	IP42	
Drop Resistance	1.8m (wired model) 1.5m (wireless model)	

### Wireless Characteristics

Wireless Standard	Bluetooth V2.1, HID and SPP profile supported	
Battery type	Lithium-ion Battery (3.7V, 2600mAh)	
Charge Time	Approx. 5 hours	
Scan Per Charge	50,000 times (continuous read)	20,000 times (continuous read)
Radio Transmission Range	Class 1, up to 100m (in open space)	

### Symbologies



Specification	SD380	IG380
Light Source	632±5nm Red LED	White LED
Depth of Field	Contact to 200mm@20mil/0.5mm, PCS90%, Code 39	Up to 250mm@20mil/0.5mm, PCS90%, Code 39
Field of View	90mm (40mm at window)	Horizontal: 55°, Vertical: 35°
Scan Rate (per second)	100 scans±10%	60 images
Resolution	4mil/0.1mm	1D: 4mil/0.1mm 2D: 8mil/0.2mm
Print Contrast Ratio	25%	
Indicator	Beeper	
Ambient Light	Up to 100,000 Lux	
Interface	RS232, USB(HID,Virtual COM),KBW	RS232, USB (HID, Virtual COM)
Dimensions	168 x 65 x 54.9mm	
Power	DC 5V±5%	
Drop Resistance	1.5m	

### Symbologies



## Small Footprint Presentation Scanner

- Scanner head can be forward and backward adjusted in a total 102° range to accommodate to your application need
- With the most compact footprint can fit in the most space constrained areas
- Support wall-mount hanging installation
- 9060i is designed for mobile payment, optional for NFC 13.56MHz card reading



Specification	LYRA L-9080i (Single face)	LYRA L-9090i (Dual Face)	LYRA L-9060i (Face up)
Light Source	White LED		White LED
Depth of Field	Up to 210mm@20mil/0.5mm, PCS90%, Code 39		Up to 250mm@20mil/0.5mm, PCS90%, Code 39
Field of View	Horizontal: 55°, Vertical: 35°		Horizontal: 40°, Vertical: 45°
Scan Rate(per second)	60 images		25cm / second
Resolution	1D: 4mil/0.1mm 2D: 8mil/0.2mm		1D: ≥5mil/0.127mm/2D: 10mil/0.25mm
Barcode on screen	Yes		Yes
Sealing Protection	IP42		-
Print Contrast Ratio	25%		25%
Indicator	Beeper and LED		Beeper
Ambient Light	Up to 100,000 Lux		Up to 100,000 Lux
Interface	RS232, USB(HID, Virtual COM)		USB(HID, Virtual COM)
Dimensions	97.89 x 74.90 x 137.94 mm		88x 125 x 100 mm
Power	DC 5V ±5%		DC 5V ±5%

### Symbologies



- Desktop scanner suited for desktop, wall-mounted, on-counter or in-counter installation
- Advanced omni-directional scan to enhance reading accuracy
- Maximized life time and optimized power consumption by auto-sensing technology for sleep and wake-up
- Scans most 1D and 2D bar codes on paper, mobile phones
- NOVA: touch control sensors for volume adjustment, built-in EAS antenna for simultaneously EAS tag deactivation
- PAVO: support reading Chinese ID card OCR



MICA Series



Specification	CUBAL C-7080i	PAVO P-3080i	NOVA N-4082i
Light Source	RED LED	650±10nm Red LED	632±5nm Red LED
Depth of Field	Up to 150mm@20mil/0.5mm, PCS 90, QRCode	Up to 250mm@13mil/0.33mm, PCS90%, Code 39;	Up to 150mm@20mil/0.5mm, PCS90%, Code 39
Field of View	Horizontal 41°, vertical 31°	Horizontal: 62°, Vertical: 41°	Horizontal: 80°, Vertical: 55° wide angle
Scan Rate (per second)	Motion tolerance: 100cm / second		
Resolution	1D: 4mil/0.1mm / 2D:8mil/0.2mm	1280x800 pixels; 1D: 4mil/0.1mm, 2D: 8mil/0.2mm	
EAS	N/A	N/A	YES
Sealing Protection	IP42	IP42	IP52
Print Contrast Ratio	25%	20%	
Indicator	LED & Buzzer	LED & Buzzer	
Ambient Light	Up to 100,000 Lux	Up to 100,000 Lux	
Interface	RS232, USB(HID, Virtual COM)	RS232, USB (HID or Virtual COM), KBW, Power USB	RS232, USB (Virtual COM)
Dimensions	96.7 x 86.7 x 143.6 mm	152 x 153.2 x 84.1mm	152 x 152 x 90mm
Power	DC 5V±5%@1A	DC 12V ±5% @1.5A	DC 5V ±5% @2A

### Symbologies



- Ideally suited for high-volume scanning in retail, transportation and production line
- 700 series with IP65 sealing protection



Specification	FS700	F1740	FS340	F1610
Light Source	632±5nm Red LED	White LED	White LED	Warm White LED
Depth of Field	Up to 500mm@20mil/0.5mm, PCS90%, Code 39	Up to 250mm@20mil/0.5mm, PCS90%, Code 39	Up to 250mm@20mil/0.5mm, PCS90%, Code 39	Up to 350mm@20mil/0.5mm, PCS90%, Code 39
Scan Rate (per second)	Smart detection, up to 500 scans	60 images	60 images	35 cm/s
Resolution	0.1mm/4mil 1M Pixles	1D: 4mil/0.1mm 2D: 8mil/0.2mm 1M Pixles	1D: 4mil/0.1mm 2D: 8mil/0.2mm 1M Pixles	1D: 5mil/0.127mm 2D: 8mil/0.2mm 0.3M Pixles
Print contrast ratio	20%			
Indicator	Beeper and LED		Beeper	Beeper and LED
Interface	RS-232, USB (HID, Virtual COM)			
Ambient Light	Up to 100,000 Lux			
Sealing Protection	IP65		N/A	
Dimensions	64.6 x 59.2 x 30mm		69 x 56 x 27.7mm	35 x 35.5 x 20.8mm
Power	DC 5V ±5%			

## Symbologies



- Multifunction scan kiosk for diversified application in self-service, ID identification, information & multimedia service and digital signage
- 10.1" LCD with capacitive multitouch screen
- Powered by Linux or Android



## System Architecture

	SK-100 Lite	SP-80
Operating Platform	Linux/Android	Linux/Android 15
Storage	8GB internal storage, with external USB and micro SD card ports, USB flash drive and SD card (not included)	8GB (Linux), 16GB (Android), with external USB and micro SD card ports, USB flash drive and SD card (not included)
Memory RAM	1GB (Linux) / 2GB (Android)	1GB (Linux) / 2GB (Android)
Power Adaptor	DC 12V±10% / 2A / 24W or POE (optional)	DC 12V±10% / 2A / 24W or POE (optional)
Dimensions	238 x 253 x 72mm	170 x 220 x 40mm

## Output Media

Display Size	10.1" (diagonal)	8" / 7" (diagonal)
Brightness	300~350 nits	180 nits / 260 nits
Resolution	1920 x 1200 pixels (FHD)	1280 x 800 pixels / 1024 x 600 Pixels
Touch Screen	Capacitive type	Capacitive type
Image Format	PNG, JPEG, GIF, BMP	PNG, JPEG, GIF, BMP
Audio Format	WAV, WMA, MP3	WAV, WMA, MP3
Video Format	MPEG-4, H.264	MPEG-4, H.264
Speakers	High Quality loudspeakers for superior audio performance	High Quality loudspeakers for superior audio performance
Earphone Jack	Optional 3.5 mm standard jack	

## Data Ports

	Micro SD card x 1, USB x 4, RS232 x 1, LAN port x 1, Power over Ethernet (optional), Exit Gate and Door Lock control (optional)	Micro SD card x 1, USB x 4, USB Type-A x2, USB Type-C x1, LAN port x 1, Power over Ethernet (optional), Exit Gate control (optional)
--	---	--

## Network Interface

Wired LAN	10/100Mb Ethernet (802.3)
Wireless LAN	802.11 b/g/n/ac, 2.4GHz and 5GHz dual band (optional)
Encryption protocols	WPA, PSK and WPA Enterprise security

## Data Inputs

Scanner Type	2D barcode imager
Scanner Coverage	Ergonomical Scan Angle Coverage

## Software and Applications

Management & Tools	Linux: Built in Web Configuration, Price Checker, Web Price Checker and sample code, , remote package upgrade Android: Web Price Checker sample code, (3rd party MDM as option)
--------------------	--

- Best value scan kiosk for self-service, interactive service, information & multimedia service, and ID identification applications in retail, transportation, medical care, hospitality and office building
- 5.7" touch screen / 4.3" color display
- Patented adjustable scanner head design

- Best value price checker to increase productivity and efficiency in retail shops
- 3.5" color display
- Remote package upgrade
- WIFI connectivity (optional)



## System Architecture

	SK-50	SK-40	SG-15 Colour
Operating Platform	Linux		
Storage	8GB (Linux) internal storage, with external USB and SD card ports External: USB flash drive and SD card (not included)		8GB (Linux) internal storage
Memory RAM	1GB		512MB
Power Adaptor	DC 12V±10% / 2A / 24W or POE (optional)		DC 5V / 2.0A or POE (optional)
Dimensions	193 x 176 x 85mm		182 x 131 x 95mm

## Output Media

	SK-50	SK-40	SG-15 Colour
Display Size	5.7" (diagonal)	4.3" (diagonal)	3.5" (diagonal)
Brightness	400 nits	350 nits	450 nits
Resolution	640 x 480 pixels (65K colors)	480 x 272 pixels (65K colors)	320 x 240 pixels (16M colors)
Touch Screen	Resistive type	N/A	N/A
Image Format	PNG, JPEG, GIF, BMP		PNG, JPEG, GIF, BMP
Audio Format	WAV, WMA, MP3		WAV
Video Format	MPEG-4, H.264		N/A
Audio Ports	High Definition Stereo (16-bit PCM 44.1 KHz)		N/A
Speakers	High Quality loudspeakers for superior audio performance		Speaker
Earphone Jack	3.5 mm standard jack		N/A

## Data Ports

	SK-50	SG-15 Colour
	SD card x 1, USB x 4, RS232 x 1, LAN port x 1, Power over Ethernet (optional) Exit Gate and Door Lock control (optional)	USB x 1, RS232 x 1, LAN x 1 Power over Ethernet (optional), Exit Gate (Optional)

## Network Interface

	SK-50	SG-15 Colour
Wired LAN	10/100Mb Ethernet (802.3)	
Wireless LAN	IEEE 802.11 a/b/g/n/ac Dual-band 2.4GHz or 5GHz (optional)	802.11a/b/g/n/ac, 2.4GHz and 5GHz dual-band (optional)
Encryption protocols	WPA, PSK and WPA Enterprise security	

## Data Inputs

	SK-50	SG-15 Colour
Scanner Type	1D omni-directional laser, 2D imager (selectable)	1D omni-directional laser, 1D Linear imager, 2D area imager (selectable)
Scanner Coverage	Adjustable from 10° to 45° vertical in 5° step lock	
Optional	NFC Reader (ISO 1443A / ISO 1443B / ISO 15693 / MIFARE Classic / MIFARE Ultralight)	N/A

## Software and Applications

Remote Management Tool	Price check application, web price checker, web configuration & management tool, remote package upgrade
------------------------	---

# Pocket Scanners

- Perfectly fit for highly mobile users in warehouse, logistics, retail and production
- 2.4G 、Bluetooth (HID 、 SPP 、 BLE) supported
- 2D area imager or 1D linear imager (selectable)
- Over 10,000 times scan battery life
- Robust design with 1.5m drop resistance and IP54/IP42 sealing protection
- Synchronization app for mobile devices and PC



Specification	MB700
Storage	224KB (over 7,000 scans of 30 bytes barcode)
Indicator	LED x 1, Beeper x 1, Vibrator x 1
Engine	1D Linear Imager(1500 pixels): MB700C, 2D(640*480 pixels): MB700i
Battery	Lithium-Polymer Battery (3.7V, 450mAh)
Battery Charging	via USB Type-C
Dimensions	93.7 L x 41.3 W x 19.8 H mm
Weight	70g
Available color	Black case and Blue color botton
Sealing Protection	IP42
Drop Resistance	1.5m

## Magnetic / Barcode Slot Readers / Pen Scanners

Brand Availability



Speciycation	MR300/800	MMR
Magnetic Card	IISO 7810-7813 and JISII	
Interface	TTL/KBW/RS232/USB	
Life Cycle	1,000,000 times	
Tracks T1&T2&T3	Decoding Density T1/T2/T3: 210/75/210 BPI Capacity T1/T2/T3: 79/40/107 Characters	
Scan Rate	100-1000mm/sec	



Speciycation	BR300/800	MBR
Light Source	RED LED/ IR	
Interface	TTL/KBW/RS232/USB	
Resolution	5.9mil/0.15mm	
Readable Barcodes	All UPC/EAN/JAN, EAN128 Code Code 39, Code 128, CODABAR/NW7, Interleave 25	
Scan Rate	100-1000mm/sec	



Speciycation	WD100	WD200	WD300
Light Source		660nm Red LED	
Sensor		Photo Diode	
Scan Speed		50-500mm/sec	
Depth of Field		Contact Type	
Resolution		5mil/0.127mm	
Ambient Light		Up to 1,500 Lux (direct sunlight)	

Symbologies



## Contact Info.

### Taiwan

#### Champtek Taiwan (Headquarters)

5F, No.1, Alley 2, Shih-Wei Lane, Chung-Cheng Rd.,  
Xindian Dist., New Taipei City 23162, Taiwan

Tel:+886-2-2219-2385

Fax:+886-2-2219-2387

E-mail: sales@champtek.com

E-mail: marketing@champtek.com

### Europe

#### Scantech-ID BV

Heliumweg 34A  
3812 RE Amersfoort  
The Netherlands

Tel:+33 (6)76 88 19 09

+31 (0)33 4698 400

+886-2-2219-2385

E-mail: sales@champtek.com

### Africa

#### Champtek South Africa

Panamo House, Building 26, Waterford Office Park,  
Waterford Drive, Fourways, Johannesburg, South Africa

Tel:+27 10 220 5360

E-mail: jayk@champtek-group.com, sales@champtek-group.com



[www.champtek.com](http://www.champtek.com)

[www.scantech-id.com](http://www.scantech-id.com)