

CHAMPTEK[®]

We value your ID's

SCANTECH ID[®]



***Computer Vision and
Auto-ID Total Solution
Provider***



Brand Story

Champtek was founded in 1985 specializing in Computer vision and AIDC Technology. We are an innovative and leading total solution provider and manufacturer in Taiwan.

After being highly successful in marketing the CHAMPTEK brand, we acquired Scantech ID, a Netherlands-based manufacturer, and expanded our line of Products globally under the dual brands of "CHAMPTEK" and "SCANTECH ID".

Nowadays CHAMPTEK and SCANTECH ID provide a wide variety of Computer vision and AIDC solutions, including Volume Measurement devices, Scan Kiosks, Price Checkers, Consumer and Rugged Tablets, mobile POS, Barcode Scanners and magnetic card readers from high C/P value combination to the industrial grade segment of the market.

The 'V' in the CHAMPTEK

The red "V" in the middle of our name CHAMPTEK stands for VALUE, which represents our respect to our most valued Customers.

We are committed and dedicated to our values which are Innovation, Quality and Reliability.

We, value your ID's !



Product Portfolio - Barcode Scanner

Champtek currently operates under two brand names, "CHAMPTEK" and "SCANTECH ID", and provides the total solution to the variety of customers' needs.

Contact to middle range Scanners

380 Series /SD700 / SD320 /SD120

Gun Type Scanners

200 /220 wired and wireless series

500 /520 wired and wireless series

600 /700 /800 wired and wireless series

Pocket Scanners

MB200x /MB300x

Fixed Mount Scanners

FI300 /IP65 FI700 series

Desktop Scanners

PAVO

NOVA

LYRA

AQUILA

CUBAL

CHAMPTEK[®]
We value your ID's

Modules

MCR14 /MIR4W / MIR7S /MICA

Magnetic stripe, barcode slot, and Wand card readers

MR300 /BR300 /WD200

SCANTECH ID[®]

Product Portfolio - Price Checker, Scan KIOSK, Volume Measurement Solution and Tablet



VM200BT handheld wireless dimensioner



Volume Measurement Solution VM Series
VM600 Dimensioner suite



VM602 Desktop station



VM605 Mobile cart



VM601 Floor station



VM603 Conveyor station



Industrial Tablet / PDA
X-80 / X-120 / MPN86

CHAMPTEK[®]
We value your ID's

SCANTECH ID[®]



SK-100 / SK-100 Lite

Scan Kiosks / Price Checkers



SK-80



SG15C / SK-40 / SK-50

Mobile Tablets / POS



Specification	X-80	X-120	MPN86
Processor	MT8788(Octa Core), 2.0GHz x4+2.0GHz x4, Separated GPU (Mali-G72)		Quad-Core 1.4Hz Processor Security Chip
Operating System	Android 11 OS		Android 9.0 OS
Memory/Storage	(UMCP) 4GB+128GB / 8GB+256GB (max.)		1GB RAM + 8GB Flash 2GB RAM + 16GB Flash Micro SD Card supported up to 128GB
Dimensions	211.50mm x 140.80mm x 20.50mm	259.50mm x 171.6mm x 19mm	194mm x 80mm x 68.80mm

Media

Display	8" WUXGA 1280 x 800 (HD) standard / 1920 x 1200 (FHD) optional	10" WUXGA 1920 x 1200 10-point multi-touch	5 inch Color Screen, Resolution 1280 x 720 (854 x 480 optional) Capacitive TouchScreen, Multi-Touch
Audio	Dual Speakers(2 x 8 Ohm 1W), Dual Microphones , USB TYP-C Earphone		Built-in Speaker, Microphone

Network Interface

Wired LAN	USB TYPE C to RJ45 Ethernet port converter, 100/1000 Mbps-(Conforms with IEEE802.3x)	100/1000 Mbps-(Conforms with IEEE802.3x)	N/A
Wireless LAN	Wi-Fi 802.11 a/b/g/n/AC		IEEE 802.11 b/g/n, support dual band 2.4GHz and 5GHz
Wireless Bluetooth	Dual Frequency (EDR+BLE 4.0), >10M		BT 4.2 (BLE) 2402-2480MHz, >10M
GPS	GPS/A-GPS/Beidou/GLONASS/ Galileo RTK High-precision (optional)	GPS/Glonass/Beidou/Galileo/QZSS/SBAS Tri-band reception concurrently	GPS: 1575.42 +/-1.023 MHz GLONASS: 1597.5~1605.8 MHz BeiDou: 1561.098 +/-2.046 MHz

4G LTE Module Band Frequency

(4G)LTE FDD	B1/B3/B5/B8	LTE-FDD B1/B3/B5/B8
(4G)LTE TDD	B34/B38/B39/B40/B41	LTE-TDD B34/B38/B39/B40/B41 (140MHz)
(3G)	WCDMA (B1/B5/B8)	WCDMA B1/B8
(2G)GSM	B3/B8 (900&1800)	GSM 900/1800 MHz

Scan Module (optional)

Camera Front	8MP, Fixed Focus	Optional: 5MP, AF with Flash
Camera Rear	13MP, with Auto Focus, Flash	2MP, Fixed Focus
2D scanner	1D/2D Barcode scanner/2D Fingerprint/RFID(NFC) module	1D/2D barcode scanner Track 1/2/3, Bi-Directional, ISO7811 Magnetic Card Reader RFID(NFC) module

Durability

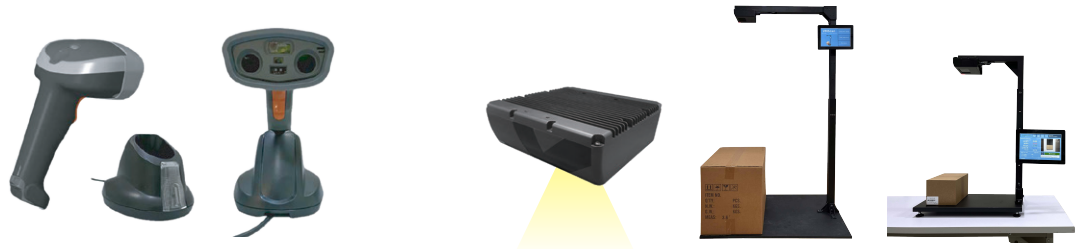
Storage Temperature	-20°C to 70°C	0°C to 50°C
Operating Temperature	-10°C to 60°C	-20°C to 60°C
Sealing Protection	IP65	IP54
Drop Test	1.2 meters	1.5 meters

Power Supply

AC Adapter	57W (19V / 3A)		DC 5V/2A
Battery Volume	Swappable 7400mAh battery pack	Swappable 12000mAh battery pack	7.4V/2600mAh equivalent to 3.7V 5200mAh rechargeable Li-ion Battery
Battery Endurance	9 hours	12 hours	stand-by time up to 240 hours
Accessory	1 to 4 Battery Charging Cradle set		Charging Base DC 9V/2.1A or upgraded base with RS232 and LAN RJ45 10M/100M ports

Interface

I/O Ports	USB TYPE-C (1*USB2.0 OTG) USB TYPE-A (2*USB2.0) DC jack SIM Card Slot Micro SDXC Card Slot(support up to 128G)	Micro SD Card Slot 1 PC SD3.0 SIM/SAM Card Slot 1 PC / 2PCS USB 1 PC TYPE C OTG TYPE-C Port with 5V/2A Power Adaptor	
Special Feature	N/A	Speedy APP trigger Physical Button	Smart handheld Mobile POS device



Specification	VM200BT Handheld Hybrid Dimensioner	VM600 Volume Dimensioner, VM601/602/605
Aimer Light Source	650±10nm Red VLD	N/A
Field of View	Horizontal 52°, Vertical 30°	Horizontal 74°, Vertical 50°
Accuracy	d=1, less than ±1cm deviation	d=0.5, less than ±0.5 cm deviation
Indicator	Beep and LED (Green, Red and Blue)	Beep and LED
Measurement time	Less than 1 second	
Object size	Support cuboid and irregular shaped measurement	
Min. dimension	10 cm / 0.394 inches cube	Refer to Dimension table
Max. dimension	60cm / 23.62 inches cube	
Color	All opaque packaging except black, very glossy and transparent	
Measurement angle	Cuboid shape objects : By pitch scan (pitch 35° ~ 65° and skew ± 7° angle) Irregular and long side standing objects : from top, vertical scan.	From mounted top, vertical scan
Measurement surface	No black, transparent or very shining background	
Ambient light	0 to 3000 lux, avoid direct sunlight	
Dimension (Device)	120.0 W x 83.0 D x 196.7 H mm	3D Camera: 156.0 W x 150.0 D x 50.0 H mm
(Charging Cradle)	119.9 W x 136.9 D x 92.1 H mm	N/A
Sealing protection	IP54	IP42

Bluetooth Wireless Characteristics

Optional Modules

Wireless Standard	Bluetooth V2.1, HID and SPP profile supported	<ol style="list-style-type: none"> 3D camera height adjustable vertical stand VM601: 120/150/180cm, VM602: 70/95/120cm Weighing scale 2D Barcode Scanner Mobile cart for VM605
Battery	Lithium-ion Battery (3.7V, 2600/3300mAh)	
Recharge Time	Approx. 5 hours	
Scan Per Charge	4,000 times or a magnetic charging cable to connect to a portable battery for heavy use	
Radio Transmission Range	Class 1, up to 100m (in open space)	

Symbologies



Dimension Table

VM601

VM600 mounted 120cm			Mounted at 150cm			Mounted at 180cm		
Object Height	Max Length	Max Width	Object Height	Max Length	Max Width	Object Height	Max Length	Max Width
2.54	120	75	2.54	155	95	7.62	190	115
15	105	65	25	130	80	30	160	100
25	95	60	50	100	60	60	125	75
40	75	45	70	75	45	90	90	55
60	55	30	90	55	30	120	55	30

Min. Dim. 5x5x5 cm

5x14x14 cm

10x20x20 cm

VM602 / VM605

VM600 mounted 70cm			Mounted at 95cm			Mounted at 120cm		
Object Height	Max Length	Max Width	Object Height	Max Length	Max Width	Object Height	Max Length	Max Width
2.54	65	40	2.54	95	55	2.54	120	75
5	60	35	10	85	50	15	105	65
10	55	30	20	70	40	25	95	60
15	45	25	30	60	35	40	75	45
25	35	20	40	50	30	60	55	30

Min. Dimension (all height) : 5 x 5 x 5 cm



VM200BT Handheld Dimensioner
Read dimension & Barcode 2 in one



VM601 Floor station



VM602 Desktop station



VM605 Mobile cart

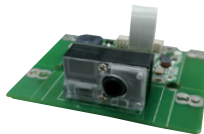
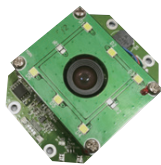
Barcode Scanning Modules

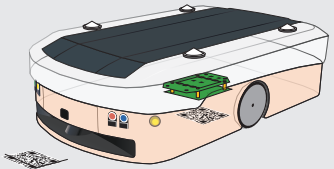
- Compact size design for built-in or OEM product applications



Specification	MCR14	MCR14S
Light Source	632±5nm Red LED	
Depth of Field	Up to 500mm@20mil/0.5mm, PCS90%, Code 39	Up to 250mm@20mil/0.5mm, PCS90%, Code 39
Scan Rate (per second)	Smart detection, up to 500 scans	100 scans ±10%
Field of View	Horizontal: 45°	
Resolution	4mil/0.1mm	
Print Contrast Ratio	25%	
Indicator	Beeper	
Interface	Module only: UART/USB (HID, Virtual COM) Module with interface board: RS232/USB/KBW	
Dimensions	25 x 20 x 11.5mm	
Power	DC 5V±5%	

Symbologies



Specification	MIR8N & NaviCode	MIR4W	MIR7S
Light Source	White LED		
Depth of Field	20~120 mm@20mil/0.5mm, NaviCode	Up to 250mm@20mil/0.5mm, PCS90%, Code 39	Up to 40mm@20mil/0.5mm, PCS90%, Code 39
Scan Rate (per second)	60 images		
Field of View	Edge on base: Long 80°, Short 57°	Horizontal: 55°, Vertical: 35°	Long Edge: 86°, Short Edge: 70°
Resolution	1280 (H) × 800 (V) pixels	1D: 4mil/0.1mm 2D: 8mil/0.2mm	
Print Contrast Ratio	30%	25%	30%
Indicator	Beeper		
Interface	RS232, USB (HID, Virtual COM)		
Dimensions	52 W x 66 D x 21.2 H mm 	A1: 53.00 W x 40.90 D x 15.20 H mm (Wide board with three mounting areas and connected by a molex cable. The engine is mounted on the board.) A2: 36.00 W x 40.90 D x 15.20 H mm (Wide board with one mounting area and connected by a molex cable. The engine is mounted on the board.) A3: 36.00 W x 40.90 D x 12.00 H mm (Narrow board with one mounting area and connected by a molex cable. The engine is separated.) D: 38.85 W x 23.50 x 5.20 H mm (Narrow board with one mounting area and connected by a FPC. The engine is separated.)	64 W x 80 D x 31.5 H mm
Power	DC 5V±5%		

Symbologies



General Purpose Barcode Scanner

IP protection Sealed Barcode Scanner



Specification	SG600/BT	IG640/BT	SG700/BT	IG740/BT
Light Source	632±5nm Red LED	White LED	632±5nm Red LED	White LED
Depth of Field	Up to 500mm@20mil/0.5mm, PCS90%, Code 39	Up to 250mm@20mil/0.5mm, PCS90%, Code 39	Up to 500mm@20mil/0.5mm, PCS90%, Code 39	Up to 250mm@20mil/0.5mm, PCS90%, Code39
Field of View	Horizontal: 45°	Horizontal: 55°, Vertical: 35°	Horizontal: 45°	Horizontal: 55°, Vertical: 35°
Scan Rate (per second)	Smart detection, up to 500 scans	60 images	Smart detection, up to 500 scans	60 images
Resolution	4mil/ 0.1mm	1D: 4mil/0.1mm 2D: 8mil/0.2mm	4mil/0.1mm	1D:4mil/0.1mm 2D:8mil/0.2mm
Print Contrast Ratio	25%			
Indicator	Beeper and LED			
Ambient Light	Up to 100,000 Lux			
Interface	RS232, USB (HID, Virtual COM)			
Dimensions	169.2 x 71.1 x 62.6mm		177.9 x 75 x 71.3mm	
Power	DC 5V ±5%			
Sealing protection	IP42		IP54 (wired model), IP42 (wireless model)	
Drop Resistance	1.5m (wired model) , 1.2m (wireless model)		1.8m (wired model) , 1.5m (wireless model)	

Wireless Characteristics

Wireless Standard	Bluetooth V2.1, HID and SPP profile supported			
Battery	Lithium-ion Battery (3.7V, 2600mAh)			
Charge Time	Approx. 5 hours			
Scan Per Charge	50,000 times (continuous read)	20,000 times (continuous read)	50,000 times (continuous read)	20,000 times (continuous read)
Radio Transmission Range	Class 1, up to 100m (in open space)			

Symbologies



1D barcode Scanners

- Best C/P value barcode scanner with reliable quality and performance
- 1D barcode reading, up to 3mil resolution
- Lightweight and compact design for comfortable handheld
- 4-in-1 combo interface with quick swap interface cable



Specification	SD120	SD320	SD700
Light Source	632±5nm Red LED		
Depth of Field	Contact to 60mm@20mil/0.5mm, PCS90%, Code39	Contact to 50mm@20mil/0.5mm, PCS90%, Code39	Contact to 80mm@20mil/0.5mm, PCS90%, Code39
Width of Field	80mm (60mm at window)	90mm (80mm at window)	90mm (80mm at window)
Scan Rate(per second)	120 scans±10%		200 scans±10%
Resolution	4mil/0.1mm		3mil/0.076mm
Print contrast ratio	25%		
Dimensions	166.4 x 78 x 77.8mm	173.5 x 90 x 56.2mm	171.3 x 82.8 x 75mm
Indicator	Beeper	Beeper and LED	
Ambient light	Up to 5,000 Lux Max		Up to 20,000 Lux Max
Interface	RS232, USB(HID,Virtual COM),KBW		
Power	DC 5V ±5%		
Drop resistance	1.2m/ 47.24inches		

Symbologies



OCR-B Supported 2D Barcode Scanner

- Ergonomic design and high performance
- Design with IP42 protection
- RF and Bluetooth supported
- 220BT and 520BT are equipped a RF/BT dongle, while the 221BT and 521BT with a cradle
- 520 and 521 series support to read OCR-B character



Specification	IG220	IG520
Light Source	White light illumination, Red Dot aimer	White light illumination, Red bar aimer
Depth of Field	Up to 320 mm@20mil/0.5mm, PCS90%, Code39	Up to 420 mm@20mil/0.5mm, PCS90%, Code39
Field of View	Horizontal: 36°, Vertical: 28°	Horizontal: 35°, Vertical: 27°
Motion tolerance	25cm per second	35cm per second
Resolution	640(H) x 480(V) pixels, 1D: 4mil/0.1mm 2D: 8mil/0.2mm QRCode	1280(H) x 800(V) pixels, 1D: 3mil/0.076mm 2D: 8mil/0.2mm QRCode
Print Contrast Ratio	25%	15%
Indicator	Beeper and LED	
Ambient Light	Up to 100,000 Lux	
Interface	RS232, USB (HID, Virtual COM)	
Dimensions	L167x W70 x H88mm	
Power	DC 5V±5%	
Sealing protection	IP42	
Drop Resistance	1.5m/ 59.05inches	

Symbologies



Specification	IG221 / IG222	IG521 / IG522
Light Source	White light illumination, Red Dot aimer	White light illumination, Red bar aimer
Depth of Field	Up to 320 mm@20mil/0.5mm, PCS90%, Code39	Up to 420 mm@20mil/0.5mm, PCS90%, Code39
Field of View	Horizontal: 36°, Vertical: 28°	Horizontal: 35°, Vertical: 27°
Motion tolerance	25cm per second	35cm per second
Resolution	640(H) x 480(V) pixels, 1D: 4mil/0.1mm 2D: 8mil/0.2mm QRCode	1280(H) x 800(V) pixels, 1D: 3mil/0.076mm 2D: 8mil/0.2mm QRCode
Print Contrast Ratio	25%	15%
Indicator	Beeper and LED	
Ambient Light	Up to 100,000 Lux	
Interface	2.4G RF or Bluetooth (HID, SPP, BLE)	
Dimensions	L167x W70 x H88mm (Scanner), L123 x W88.5 x H70mm (Cradle)	
Power	DC 5V±5%	
Drop Resistance	1.5m/ 59.05inches	

Wireless Characteristics

Wireless Standard	2.4GHZ (ISM frequency band) , Bluetooth 4.2	
Battery type	Lithium-ion Battery (3.7V, 2000mAh)	
Charge Time	Approx. 7 hours	
Scan Per Charge	>= 12 hours in continuous read	>= 12 hours in continuous read
Radio Transmission Range	>= 60m line of sight for 2.4G RF, up to 30m for Bluetooth 4.2	

Symbologies



OCR-B Supported 2D Barcode Scanner

Economical 2D Barcode Scanner



Specification	IG500	IG500BT	IG200
Light Source	White Light LED, Green Aimer		White Light LED, Red Aimer
Depth of Field	1D: Up to 450mm@13mil/0.33mm, PCS90%, UPC-A 2D: Up to 480mm@20mil/0.5mm, PCS90%, QRCode		1D: Up to 220mm@13mil/0.33mm, PCS90%, UPC-A 2D: Up to 180mm@20mil/0.5mm, PCS90%, QRCode
Field of View	Horizontal: 45°, Vertical: 36°		Horizontal: 36°, Vertical: 28°
Resolution	1D: 3mil/0.076mm, 2D: 6.67mil/0.17mm, Sensor 1024k pixels		1D: 4mil/0.1mm, 2D: 6.67mil/0.17mm, 307k pixels
Print Contrast Ratio	20%		25%
Indicator	Beeper and LED		Beeper and LED
Ambient Light	Up to 100,000 Lux		Up to 100,000 Lux
Interface	RS232, USB (HID, Virtual COM)		RS232, USB (HID, Virtual COM), non-replaceable
Dimensions	172 x 67 x 87mm		150 x 70 x 95mm
Power	5 VDC (+/- 10%)/500mA		5 VDC (+/- 10%)/500mA
Sealing protection	IP52		N/A
Drop Resistance	1.2m/ 47.24 inches		1.2m/ 47.24 inches

Wireless Characteristics

Wireless Standard	Wired	Bluetooth 4.2 and 2.4G RF supported	Wired
Battery		Lithium-ion Battery (3.7V, 2000mAh)	Note: Not support OCR-B, Dotcode
Charge Time		Approx. 5 hours	
Scan Per Charge		80,000 times (continuous read)	
Radio Transmission Range		Up to 100m @2.4G RF, 50m @ Bluetooth connection in open space	
Communication mode	Wireless real-time transmission/wired transmission/storage mode		

Symbologies



Fixed Mount Scanners

- Ideally suited for high-volume scanning in retail, transportation and production line
- 700 series with IP65 sealing protection



Specification	FS700	FI740	FS310	FI340
Light Source	632±5nm Red LED	White LED	632±5nm Red LED	White LED
Depth of Field	Up to 500mm@20mil/0.5mm, PCS90%, Code 39	Up to 250mm@20mil/0.5mm, PCS90%, Code 39	Up to 500mm@20mil/0.5mm, PCS90%, Code 39	Up to 250mm@20mil/0.5mm, PCS90%, Code 39
Scan Rate (per second)	Smart detection, up to 500 scans	60 images	Smart detection, up to 500 scans	60 images
Resolution	0.1mm/4mil	1D: 4mil/0.1mm 2D: 8mil/0.2mm	0.1mm/4mil	1D: 4mil/0.1mm 2D: 8mil/0.2mm
Print contrast ratio	25%			
Indicator	Beeper and LED		Beeper	
Interface	RS-232, USB (HID, Virtual COM)			
Ambient Light	Up to 100,000 Lux			
Sealing Protection	IP65		N/A	
Dimensions	64.6 x 59.2 x 30mm		69 x 56 x 27.7mm	
Power	DC 5V ±5%			

Symbologies



General Purpose 1D or 2D Barcode Scanner



- Ergonomic and trendy design
- Design with IP42 protection
- Bluetooth supports HID and SPP profile
- Up to 100m transmission range (in open space)

Specification	SG800/BT	IG820/BT
Light Source	632±5nm Red LED	White LED
Depth of Field	Up to 600mm@20mil/0.5mm, PCS90%, Code 39	Up to 250mm@20mil/0.5mm, PCS90%, Code 39
Field of View	Horizontal: 45°	Horizontal: 55°, Vertical: 35°
Scan Rate (per second)	Smart detection, up to 500 scans	60 images
Resolution	4mil/0.1mm	1D: 4mil/0.1mm 2D: 8mil/0.2mm
Print Contrast Ratio	25%	
Indicator	Beeper and LED	
Ambient Light	Up to 100,000 Lux	
Interface	RS232, USB (HID, Virtual COM)	
Dimensions	192 x 78 x 72mm	
Power	DC 5V±5%	
Sealing protection	IP42	
Drop Resistance	1.8m (wired model) 1.5m (wireless model)	

Wireless Characteristics

Wireless Standard	Bluetooth V2.1, HID and SPP profile supported	
Battery type	Lithium-ion Battery (3.7V, 2600mAh)	
Charge Time	Approx. 5 hours	
Scan Per Charge	50,000 times (continuous read)	20,000 times (continuous read)
Radio Transmission Range	Class 1, up to 100m (in open space)	

Symbologies



Specification	SD380	IG380
Light Source	632±5nm Red LED	White LED
Depth of Field	Contact to 200mm@20mil/0.5mm, PCS90%, Code 39	Up to 250mm@20mil/0.5mm, PCS90%, Code 39
Field of View	90mm (40mm at window)	Horizontal: 55°, Vertical: 35°
Scan Rate (per second)	100 scans±10%	60 images
Resolution	4mil/0.1mm	1D: 4mil/0.1mm 2D: 8mil/0.2mm
Print Contrast Ratio	25%	
Indicator	Beeper	
Ambient Light	Up to 100,000 Lux	
Interface	RS232, USB(HID,Virtual COM),KBW	RS232, USB (HID, Virtual COM)
Dimensions	168 x 65 x 54.9mm	
Power	DC 5V±5%	
Drop Resistance	1.5m	

Symbologies



Small Footprint Presentation Scanner

- Scanner head can be forward and backward adjusted in a total 102° range to accommodate to your application need
- With the most compact footprint can fit in the most space constrained areas
- Support wall-mount hanging installation



Specification	LYRA L-9080i (Single face)	LYRA L-9090i (Dual Face)
Light Source	White LED	
Depth of Field	Up to 210mm@20mil/0.5mm, PCS90%, Code 39	
Field of View	Horizontal: 55°, Vertical: 35°	
Scan Rate(per second)	60 images	
Resolution	1D: 4mil/0.1mm 2D: 8mil/0.2mm	
Barcode on screen	Yes	
Sealing Protection	IP42	
Print Contrast Ratio	25%	
Indicator	Beeper and LED	
Ambient Light	Up to 100,000 Lux	
Interface	RS232, USB(HID, Virtual COM)	
Dimensions	97.89 x 74.90 x 137.94 mm	
Power	DC 5V ±5%	

Symbologies



- Scans most 1D and 2D bar codes on paper, mobile phones
- With its compact size and small foot-print can fit in the most space constrained areas.
- Lightweight and ergonomic design, best cost-effective investment.
- Advanced scan pattern design with 20 scanning line for high volume hands-free barcode reading
- Built-in EAS antenna for simultaneously barcode scanning and EAS tag deactivation
- IP42 environmental sealing protection



Specification	CUBAL C-7080i	AQUILA A-8050
Light Source	RED LED	650±10nm VLD
Depth of Field	Up to 150mm@20mil/0.5mm, PCS 90, QRCode, 160mm@13mil/0.33mm EAN13	Up to 240mm@13mil/0.33mm, PCS 90, Code 39
Scan Pattern	Omni-Direction, FOV: Horizontal 41°, vertical 31°	5 directions scan field, 20 lines scan pattern, single line option
Scan Rate (per second)	Motion tolerance: 100cm / second	1,350 scans
Resolution	1D: 4mil/0.1mm / 2D:8mil/0.2mm	4mil/0.1mm
EAS	N/A	YES
Sealing Protection	IP52	IP42
Print Contrast Ratio	25%	25%
Indicator	LED & Buzzer	Speaker & LED
Ambient Light	Up to 100,000 Lux	Up to 4,800 Lux
Interface	RS232, USB(HID, Virtual COM)	RS232, USB(HID, Virtual COM)
Dimensions	96.7 x 86.7 x 143.6 mm	116 x 84 x 164 mm
Power	DC 5V±5%@2A	DC 5V±5%@2A

Symbologies



- Designed for high volume hands-free scanning
- Maximized life time and optimized power consumption by intelligent sleep and wake-up auto-sensing technology
- Optional stands and adjustable scanner angle fits in all mounting scenarios
- High accuracy in reading of 1D and 2D codes printed or on mobile devices
- Optimized design for hands-free barcode scanning in built-in and OEM applications
- Compact size fits to on desk or wall-mounted installation



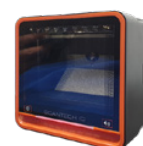
Specification	MICA M-9030 with Stand	MICA M-9084i
Light Source	650±10nm VLD	White LED
Depth of Field	Up to 230mm@13mil/0.33mm, PCS90%, Code 39	Up to 250mm@20mil/0.5mm, PCS90%, Code 39
Scan Pattern	6 directions scan field, 24 lines scan pattern	Horizontal: 55°, Vertical: 35°
Scan Rate (per second)	2,000 scans ± 5%	60 images
Resolution	5mil/0.127mm	1D: 4mil/0.1mm, 2D: 8mil/0.2mm
Print Contrast Ratio	25%	
Indicator	Beeper and LED	
Ambient Light	Up to 4,800 Lux	Up to 100,000 Lux
Interface	RS232, USB(HID, Virtual COM), KBW, Power USB (option)	RS232, USB(HID, Virtual COM)
Dimensions	67 x 62 x 46mm (body only)	
Power	DC 5V ±5%	

Symbologies



2D Counter Scanner

- Desktop scanner suited for desktop, wall-mounted, on-counter or in-counter installation
- Advanced omni-directional scan pattern to enhance reading accuracy
- Maximized life time and optimized power consumption by auto-sensing technology for sleep and wake-up
- NOVA: touch control sensors for volume adjustment, built-in EAS antenna for simultaneously barcode scanning and EAS tag deactivation
- PAVO: support reading Chinese ID card OCR



Specification	PAVO P-3080i	NOVA N-4082i
Light Source	650±10nm Red LED	632±5nm Red LED
Depth of Field	Up to 250mm@13mil/0.33mm, PCS90%, Code 39; up to 200mm@20mil QR	Up to 150mm@20mil/0.5mm, PCS90%, Code 39; Up to 100mm@QR
Scan Pattern	Horizontal: 62°, Vertical: 41°	Horizontal: 80°, Vertical: 55° wide angle
Resolution	1280x800 pixels; 1D: 4mil/0.1mm, 2D: 8mil/0.2mm	
Indicator	Speaker & LED	
Print Contrast Ratio	20%	
Interface	RS232, USB (HID or Virtual COM), KBW, Power USB	RS232, USB (Virtual COM)
Dimensions	152 x 153.2 x 84.1mm	152 x 152 x 90mm
EAS	No	YES
Ambient Light	Up to 100,000 Lux (direct sunlight)	
Input Voltage	DC 12V ±5% @1.5A	DC 5V ±5% @2A

Symbologies



- Multifunction scan kiosk for diversified application in self-service, ID identification, information & multimedia service and digital signage
- 10.1" LCD with capacitive multitouch screen
- Powered by Linux or Android

- Multifunction scan kiosk for diversified application in self-service, price checks, facial recognition, access control, NFC and ticket checks services
- 8" LCD with capacitive multitouch screen
- Patented adjustable scanner head design
- Powered by Linux or Android



System Architecture

	SK-100 / SK-100 Lite		SK-80	
Operating Platform	Linux	Android	Linux	Android
Storage	8GB internal storage, with external USB and micro SD card ports, USB flash drive and SD card (not included)		32GB internal storage (OS included) Expansion Micro SD card, supports class 2 to class 10 and UHS-1 SD cards (not included)	
Memory RAM	1GB (Linux) / 2GB (Android)		4 GB	
Power Adaptor	DC 12V±10% / 2A / 24W or POE (optional)			
Dimensions	238 x 253 x 72mm		Kiosk: 118 x 262 x 80 mm; External module: 119 x 46 x 55 mm (Optional)	

Output Media

Display Size	10.1" (diagonal)	8" (diagonal)
Brightness	450 nits	450 nits
Resolution	1920 x 1200 pixels (FHD)	1280 X 800 pixels (FHD)
Touch Screen	Capacitive type	
Image Format	PNG, JPEG, GIF, BMP	
Audio Format	WAV, WMA, MP3	
Video Format	MPEG-4, H.264	
Speakers	High Quality loudspeakers for superior audio performance (SK-100 two speakers, SK-80 one)	
Earphone Jack	3.5 mm standard jack	N/A
Dual Display(HDMI)	Duplicated mode (Default), Extended mode (SDK needed)	N/A


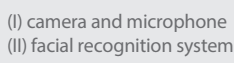

Data Ports

	Micro SD card x 1, USB x 4, RS232 x 1, LAN port x 1, Power over Ethernet (optional) Exit Gate and Door Lock control (optional)	Micro SD card x 1, USB x 2, RJ45 Ethernet port x 1, Power over Ethernet (optional) Exit Gate and Door Lock control (optional)
--	---	--

Network Interface

Wired LAN	10/100Mb Ethernet (802.3)	1000Mb Ethernet (802.3)
Wireless LAN	802.11 b/g/n/ac, 2.4GHz and 5GHz dual band (optional)	802.11 a/b/g/n/ac, 2.4GHz and 5GHz dual band (optional)
Encryption protocols	WPA, PSK and WPA Enterprise security	

Data Inputs

Scanner Type	2D barcode imager	2D barcode imager
Scanner Coverage	Ergonomical Scan Angle Coverage	Adjustable from 0° to 45° vertical in 15° step lock
Optional modue	NFC Reader (ISO 1443A / ISO 1443B / ISO 15693 / MIFARE Classic / MIFARE Ultralight) Model equipped Camera and Microphone (SK-100), Model without Camera and Microphone (SK-100 Lite)	 (I) camera and microphone  (II) facial recognition system  (III) L-shaped tray/stand for vertical scan

Applicable to various kinds application, include self-service, price checks, access control by facial, ID or NFC recognition, ticket or lottery checks, share space calendar and customer hospitality service.

Software and Applications

Remote Management & Tools	Remote package upgrade, Synchronizing group units, Web Configuration Price Checker, Web Price Checker, Promotion Tool	Remote package upgrade, Synchronizing group units, Web Configuration Web Price Checker, sample code	Remote package upgrade, Synchronizing group units, Web Configuration Price Checker, Web Price Checker, Promotion Tool	Web Price Checker, Promotion tool, SK-Talk, SK-Facial Recognition. sample code
---------------------------	--	--	--	--

- Best value scan kiosk for self-service, interactive service, information & multimedia service, and ID identification applications in retail, transportation, medical care, hospitality and office building
- 5.7" touch screen / 4.3" color display
- Patented adjustable scanner head design
- Powered by Linux

- Best value price checker to increase productivity and efficiency in retail shops
- 3.5" color display
- Remote package upgrade
- WIFI connectivity (optional)



System Architecture

	SK-50	SK-40	SG-15 Colour
Operating Platform	Linux		
Storage	8GB (Linux) internal storage, with external USB and SD card ports External: USB flash drive and SD card (not included)		8GB (Linux) internal storage
Memory RAM	1GB		512MB
Power Adaptor	DC 12V±10% / 2A / 24W or POE (optional)		DC 5V / 2.0A or POE (optional)
Dimensions	193 x 176 x 85mm		182 x 131 x 95mm

Output Media

	SK-50	SK-40	SG-15 Colour
Display Size	5.7" (diagonal)	4.3" (diagonal)	3.5" (diagonal)
Brightness	400 nits	350 nits	450 nits
Resolution	640 x 480 pixels (65K colors)	480 x 272 pixels (65K colors)	320 x 240 pixels (16M colors)
Touch Screen	Resistive type	N/A	N/A
Image Format	PNG, JPEG, GIF, BMP		PNG, JPEG, GIF, BMP
Audio Format	WAV, WMA, MP3		WAV
Video Format	MPEG-4, H.264		N/A
Audio Ports	High Definition Stereo (16-bit PCM 44.1 KHz)		N/A
Speakers	High Quality loudspeakers for superior audio performance		Speaker
Earphone Jack	3.5 mm standard jack		N/A

Data Ports

	SK-50	SG-15 Colour
	SD card x 1, USB x 4, RS232 x 1, LAN port x 1, Power over Ethernet (optional) Exit Gate and Door Lock control (optional)	USB x 1, RS232 x 1, LAN x 1 Power over Ethernet (optional), Exit Gate (Optional)

Network Interface

	SK-50	SG-15 Colour
Wired LAN	10/100Mb Ethernet (802.3)	
Wireless LAN	IEEE 802.11 a/b/g/n/ac Dual-band 2.4GHz or 5GHz (optional)	802.11a/b/g/n/ac, 2.4GHz and 5GHz dual-band (optional)
Encryption protocols	WPA, PSK and WPA Enterprise security	

Data Inputs

	SK-50	SG-15 Colour
Scanner Type	1D omni-directional laser, 2D imager (selectable)	1D omni-directional laser, 1D Linear imager, 2D area imager (selectable)
Scanner Coverage	Adjustable from 10° to 45° vertical in 5° step lock	
Optional	NFC Reader (ISO 1443A / ISO 1443B / ISO 15693 / MIFARE Classic / MIFARE Ultralight)	N/A

Software and Applications

Remote Management Tool	Price check application, web price checker, web configuration & management tool, remote package upgrade
------------------------	---

- Perfectly fit for highly mobile users in warehouse, logistics, retail and production
- Bluetooth v2.1 Class 2, HID and SPP mode supported
- 2D area imager, 1D linear imager or 1D laser scanner (selectable)
- Over 10,000 times scan battery life
- Robust design with 1.5m drop resistance and IP54 sealing protection
- High contrast rate 0.96" OLED display (*MB300x series)
- Synchronization app for mobile devices and PC



Specification	MB200	MB300
Storage	8MB (over 100,000 scans of 50 bytes barcode)	
Display	N/A	0.96" OLED (128x64 dots, monochrome)
Indicator	LED x 1, Beeper x 1, Vibrator x 1	
Engine	1D Linear Imager: MB200C, 2D: MB200i 1D Linear Imager: MB300C, 2D: MB300i	
Battery	Lithium-Polymer Battery (3.7V, 500mAh)	
Battery Charging	via Micro USB	
Dimensions	90 x 41 x 23.4mm	
Weight	70g	
Available color	Black cover and dark gray bottom cases	
Sealing Protection	IP54	
Drop Resistance	1.5m	

Magnetic / Barcode Slot Readers / Pen Scanners



Specification	MR300/800	MMR
Magnetic Card	IISO 7810-7813 and JISII	
Interface	TTL/KBW/RS232/USB	
Life Cycle	1,000,000 times	
Tracks T1&T2&T3	Decoding Density T1/T2/T3: 210/75/210 BPI Capacity T1/T2/T3: 79/40/107 Characters	
Scan Rate	100-1000mm/sec	



Specification	BR300/800	MBR
Light Source	RED LED/ IR	
Interface	TTL/KBW/RS232/USB	
Resolution	5.9mil/0.15mm	
Readable Barcodes	All UPC/EAN/JAN, EAN128 Code Code 39, Code 128, CODABAR/NW7, Interleave 25	
Scan Rate	100-1000mm/sec	



Specification	WD100	WD200	WD300
Light Source		660nm Red LED	
Sensor		Photo Diode	
Scan Speed		50-500mm/sec	
Depth of Field		Contact Type	
Resolution		5mil/0.127mm	
Ambient Light		Up to 1,500 Lux (direct sunlight)	

Contact Info.

Taiwan

Champtek Taiwan (Headquarters)

1F, No.4, Alley 2, Shih-Wei Lane, Chung-Cheng Rd.,
Xindian Dist., New Taipei City 231, Taiwan

Tel:+886-2-2219-2385

Fax:+886-2-2219-2387

E-mail: sales@champtek.com

E-mail: marketing@champtek.com

China

Champtek China

Room 2322, No.168, Yude Rd.,
Xuhui District, Shanghai, China

Tel:+86-21-5489-0021

Fax:+86-21-5489-1833

E-mail: sales@champtek.com

Europe

Scantech-ID BV

Heliumweg 34a
3812 RE Amersfoort
The Netherlands

Tel:+31 (0)33 4698 400

Fax:+31 (0)33 4650 615

E-mail: sales@champtek.com

Africa

Champtek South Africa

Panamo House, Building 26, Waterford Office Park,
Waterford Drive, Fourways, Johannesburg, South Africa

Tel:+27 10 220 5360

E-mail: jayk@champtek-group.com, sales@champtek-group.com

www.champtek.com

www.scantech-id.com

