

# SPECIFICATION

Customer :

Customer's Model No. :

Model No. : MB3X XX Series

Date: 2016.02.19

Sample Serial No. :

Spec. Version & Revision Date: V01

2016.02.19

Received/Approved by

**SCANTECH ID**<sup>®</sup>  
CHAMPTEK Group

**Web:** <http://scantech-id.com>  
**E-mail:** [sales@scantech-id.com](mailto:sales@scantech-id.com)

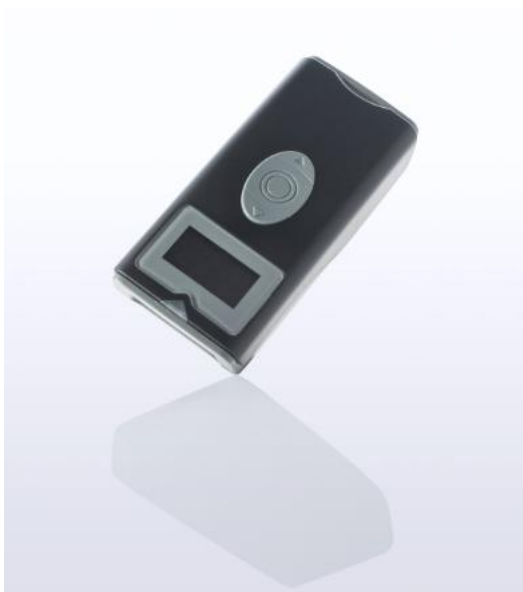
**SCANTECH ID**  
Heliumweg 34a 3812 RE Amersfoort,  
The Netherlands

**TEL:** +31 (0) 33 4698400  
**FAX:** +31 (0) 33 4650615

## Revision History

Version	Date	Context
V01	2016.02.19	Tony release

# MB300 series Wireless Pocket Scanner



## Technical Product Specification

System Architecture	
Micro Processor	32-bit
Operating Platform	Proprietary
Flash Memory	512 Kbyte program. 8 M bytes user data that can save over 100,000 items of 50 bytes barcode data.
RAM Memory	128 Kbytes
Display Size	0.96" OLED 128x64 dots Monochrome
Input Keys	3 buttons, include 1. scan and confirm trigger button, 2. upward scroll button , 3. downward scroll button
Indicator	1. LED x 1(White/Green/Blue/Red) 2. Beeper x 1 3. Vibration motor x 1
Environmental	
Operating Temp.	0°C to 50 °C
Storage Temp.	-20 °C to 70 °C
Power Source	
Battery	Lithium-Polymer (3.7V DC)
Battery Charging	via Micro USB connector (5V)
Physical Characteristics	
Dimensions	41.8mm x 89.9mm x 23.6mm ( W x D x H)
Weight	Designed to be approx. 70 g(With Battery & OLED Panel)
Available color	Black cover and dark gray bottom cases
Hanger	1 Hanger Hole
Protection	IP54 sealing protection
Drop Spec.	1.5m (5 feet)
Data Input	
Scanner possibilities	Options: by respective rollout schedule. One of the barcode scanners  (1) [MB300C] - CCD 1D Scanner Scan rate: Smart detect up to 500 scans/sec , Visible Red light 633nm Up to 140nm @ Code 39 ,PCS 90%(0.1mm) Ambient light,50,000 Lux (Max) @ Code 39, PCS 90%(20 mil) <b>All UPC/EAN/JAN,EAN128 Code, Code 39, Code 30 Full ASCII , Code32/Italian Pharmacy, Code 128, CODABAR/NW7, Interleave 25, Industrial 25, Matrix 25, Matrix 25, MSI.PLESSEY, Telepen, Code 93, Code 11, China Postage, Code 26, LCD25, GS1 DataBar Omnidirectional &amp; Stacked, GS1 DataBar Limited, GS1 DataBar Expanded &amp; Stacked</b>

(2) [MB300i] - 2D imager scanner

Up to 120 scans per second in linear emulation and 60 images per second in 2D area mode

Visible Red light 633nm

Up to 180nm @ Code 39 ,PCS 90%(0.127mm)

Ambient light, 100,000 Lux Max (Sunlight)

1D Symbologies:

**EAN/UPC, UCC/EAN128, ISBN, ISBT, Code 11, Code 39, Code 93/93i, Code 128, Interleaved, Matrix, Industrial, Standard 2 of 5, Codabar, MSI, Plessey, Telepen, Postal codes, GS1 DataBar**

2D Symbologies:

**Data Matrix, Data Matrix Inverse, PDF417, Maxicode, QR code, QR code Inverse, Aztec(& Inverse), EAN.UCC composite, MicroQR code**

(3) [MB300L] - Laser 1D scanner

Up to 104 scans per second nominal

Visible laser diode, 650 nm

Up to 160nm @ Code 39 ,PCS 90%(0.127mm)

Ambient light, 100,000 Lux Max (Sunlight)

**All UPC/EAN/JAN, EAN128 Code, Code 39, Code 30 Full ASCII , Code32/Italian Pharmacy, Code 128, CODABAR/NW7, Interleave 25, Industrial 25, Matrix 25, Matrix 25, MSI.PLESSEY, Telepen, Code 93, Code 11, China Postage, Code 26, LCD25, GS1 DataBar Omnidirectional & Stacked, GS1 DataBar Limited, GS1 DataBar Expanded & Stacked**

**Communication Interface**

Wired                      Micro USB V2.0 ( for Power charging only)

Wireless                      Bluetooth 2.1+EDR+ SSP (Class 2)

**Functions**

Standby Duration              Over 3 months

Scan per charge              [BT off] over 10,000 scans / [BT On] over 5,000 scans under normal operating conditions after battery full charged.

Low Battery Alert              Battery levels are indicated by the LED illuminating color

Data Handling                      Able to be chosen as on-line (via BT ) or off-line (batch) mode.

Off-line Mode                      Can save over 100,000 items of 50 bytes barcode data.

Indication combination              Can be configured as  
(1) Scan Review + LED indication (2) Vibration + LED indication  
(3) Beep + LED indication or (4) All indication Enable

Compatibility                      Customers can easily develop AP on different OS.

Due to Champtek’s continuing product improvement programs, specifications and features are subjected to change without prior notices.